

LEADER IN WELDING TECHNOLOGY

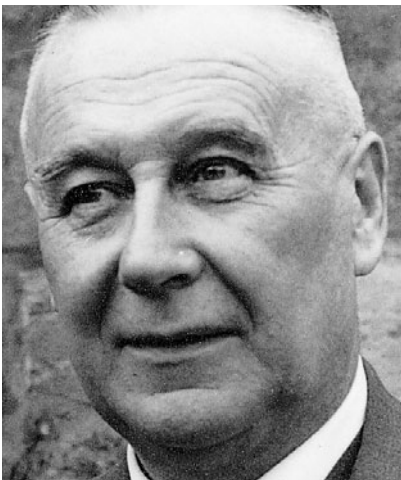




PIONEERING SPIRIT OF A MEDIUM-SIZED COMPANY

- In 1923 Mr. Clemens Jungeblodt senior founded a company called „Elektro-Apparate-Bau GmbH“. He initially designed brazing units for overlapped brazing of bandsaws, later for brazing of Widia or HSS tips on tools.
- In 1958 his son Mr. Clemens Jungeblodt took over the technical management of the company. A few years later his brother Mr. Eberhard Jungeblodt also joined the company, taking over the commercial management.
- Since 2006 the next generation Ms. Dorothee Jungeblodt and Mr. Max Clemens Jungeblodt have been running the business together as the new board of directors.
- Continuing increasing success characterizes the family company IDEAL. With its solid foundation grown from tradition, it is well prepared for today's and tomorrows' challenges.

2



Clemens Jungeblodt sen.



Clemens Jungeblodt



Eberhard Jungeblodt





FAIR TEAMWORK BETWEEN CUSTOMERS – SUPPLIERS - EMPLOYEES

- People are the driving force – more than 200 motivated, committed and well-qualified employees guarantee our success in the international market. They create sophisticated solutions for our customers' benefit.
- Many years of experience and close collaboration with our customers has helped us to reach a well-respected position in resistance welding technology and to become a reliable partner for the industry. Our team of experienced engineers is ready to evaluate our customers' welding applications and to develop the best technical and economical solutions.
- The social component is also an important factor for us. IDEAL is committed to the young generation and its education and training. Professional support, training and social security of our employees is important to us.



The management: Dorothee Jungeblodt and Max Clemens Jungeblodt



Headquarters in Lippstadt

YOUR RELIABLE PARTNER

■ Our headquarters, located in Lippstadt, is home to our administration, sales and engineering offices. The production plants in Lippstadt are well equipped for the manufacture of heavy-duty welding machines and special welding machines.

■ Our drilling and milling department is capable of fulfilling our need for precision prefabricated parts. In modern, light facilities our machines are assembled, hydraulic, pneumatic and electrical components are installed. All parts and machines undergo a thorough functional testing and performance check. During the test run period our customer's products are welded. In case of complex machines the customer's staff is trained during this final testing.



Production plant in Lippstadt



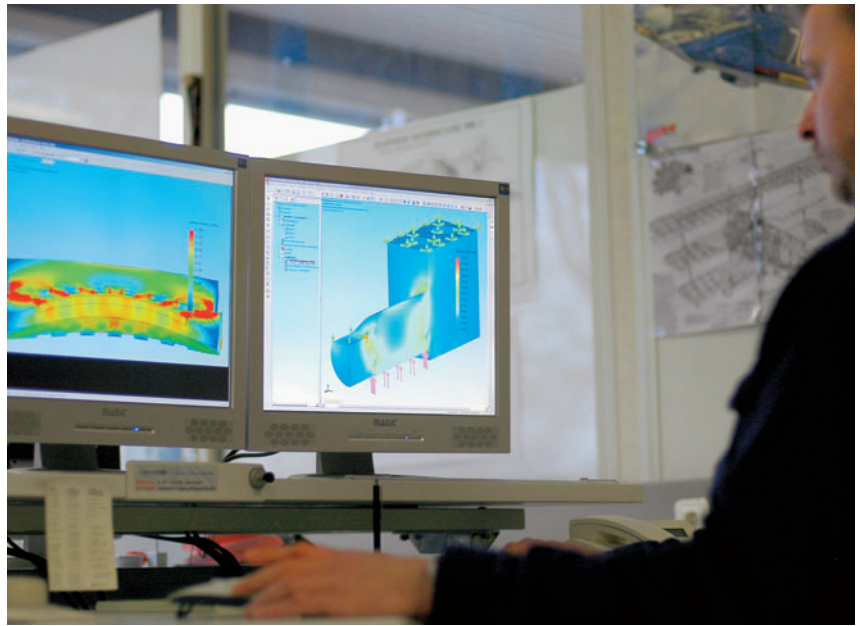
EFFICIENT SERIES PRODUCTION

5

■ Apart from the manufacture of heavy machines, one production department is equipped for the production of small and medium-sized machines in series, such as butt welding machines for bandsaws, strip, wire, stranded conductors and ropes.

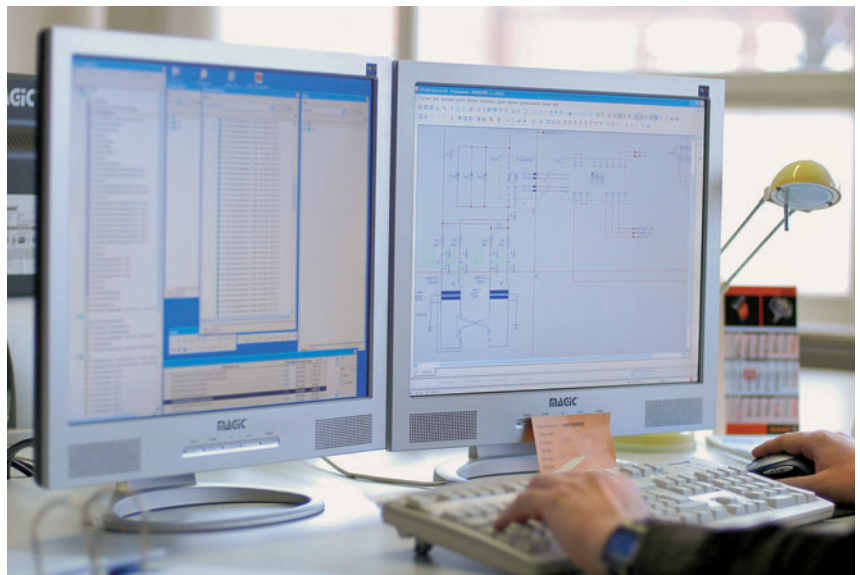
■ Due to efficient production control the optimal quantity of a series is realized and the parts are ready for assembly in due time. Our well-trained and experienced assembly team do the final assembly of the machines. All machines undergo a systematic final testing before dispatch – one of the most important processes for a continuously high product quality.





PRODUCT DESIGN – AN IMPORTANT TASK!

- Our experience in the field of resistance welding technology, close collaboration with our customers, cooperation with universities and research institutes, as well as our sense for technical trends, are the ingredients for our success.
- Project management and engineering departments work together on concepts for IDEAL welding machines. The optimisation of standard machines is a permanent task. On the other hand, we also create special tailor-made machines according to the individual requirements of our customers.
- We want to fulfil our customers' expectations. The quality standard ISO 9001 binds our organization to consequent action – to maintain high quality and guarantee outstanding customers satisfaction.





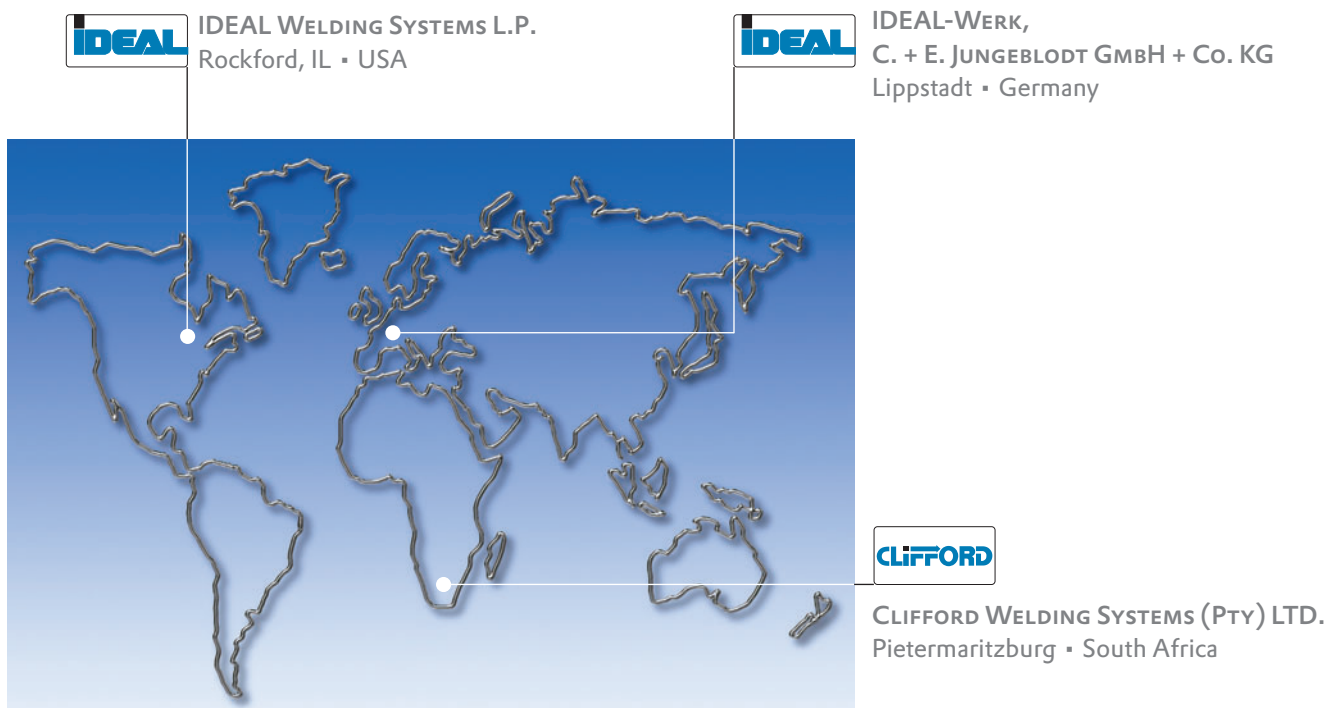
OUR SUBSIDIARIES IN SOUTH AFRICA AND THE U.S.A.

■ CLIFFORD Welding Systems (Pty) Ltd., Pietermaritzburg / South Africa, staffed by a team of skilled professionals, manufactures Industrial Mesh Welders for off coil production, complete Reinforcing Mesh Manufacturing Lines and Grating Welders.

■ CLIFFORD also offers complementary products for the wire working industry such as Wire Straightening and Cutting Machines as well as Wire Rolling Lines.

■ The original CLIFFORD company was founded in 1969 by Mr. Clifford Sobey and acquired by IDEAL in 2004, since then both companies have seen the benefits of an enlarged product offering and strong international customer support.

■ Since 1995 our subsidiary in the U.S.A., IDEAL Welding Systems, L.P., Rockford / Illinois, cares for our customers in the United States, Canada and Mexico. They offer sales and after-sales-service for IDEAL and CLIFFORD machines to assure close collaboration with our customers.



IDEAL – YOUR COMPETENT AND RELIABLE PARTNER



LEADER IN WELDING
TECHNOLOGY SINCE 1923



WE WANT TO FULFIL OUR CUSTOMERS' EXPECTATIONS

■ Consequently we are close to you. In more than 45 countries we have well-trained agents for first class professional service. Our employees know about the importance of good relationships between customers, suppliers and IDEAL. You will find us on many exhibitions worldwide.

■ „Machines are as good as the service for them“ – we take this motto seriously. Our service technicians are trained for international service to ensure our customers' benefit and success out of IDEAL Welding Machines.

IDEAL-WERK, C. + E. JUNGBLODT GMBH + Co. KG
P.O. Box 15 08 ■ 59553 Lippstadt/Germany
Phone +49 (0) 2941 – 2 06-0 ■ Fax: +49 (0) 2941 - 2 06-1 69
e-mail: info@ideal-werk.com ■ www.ideal-werk.com

IDEAL WELDING SYSTEMS L.P.
P.O. Box 6287 ■ Rockford, Illinois 61125-1287/USA
Phone +1 815 874 4349 ■ Fax: +1 815 874 4015
e-mail: idealweld@idealweld.com ■ www.idealweld.com

CLIFFORD WELDING SYSTEMS (PTY) LTD.
P.O. Box 2190 ■ 3200 Pietermaritzburg/South Africa
Phone +27 33 355 34 44 ■ Fax: +27 33 355 34 34
e-mail: sales@cliffeng.com ■ www.cliffeng.com

